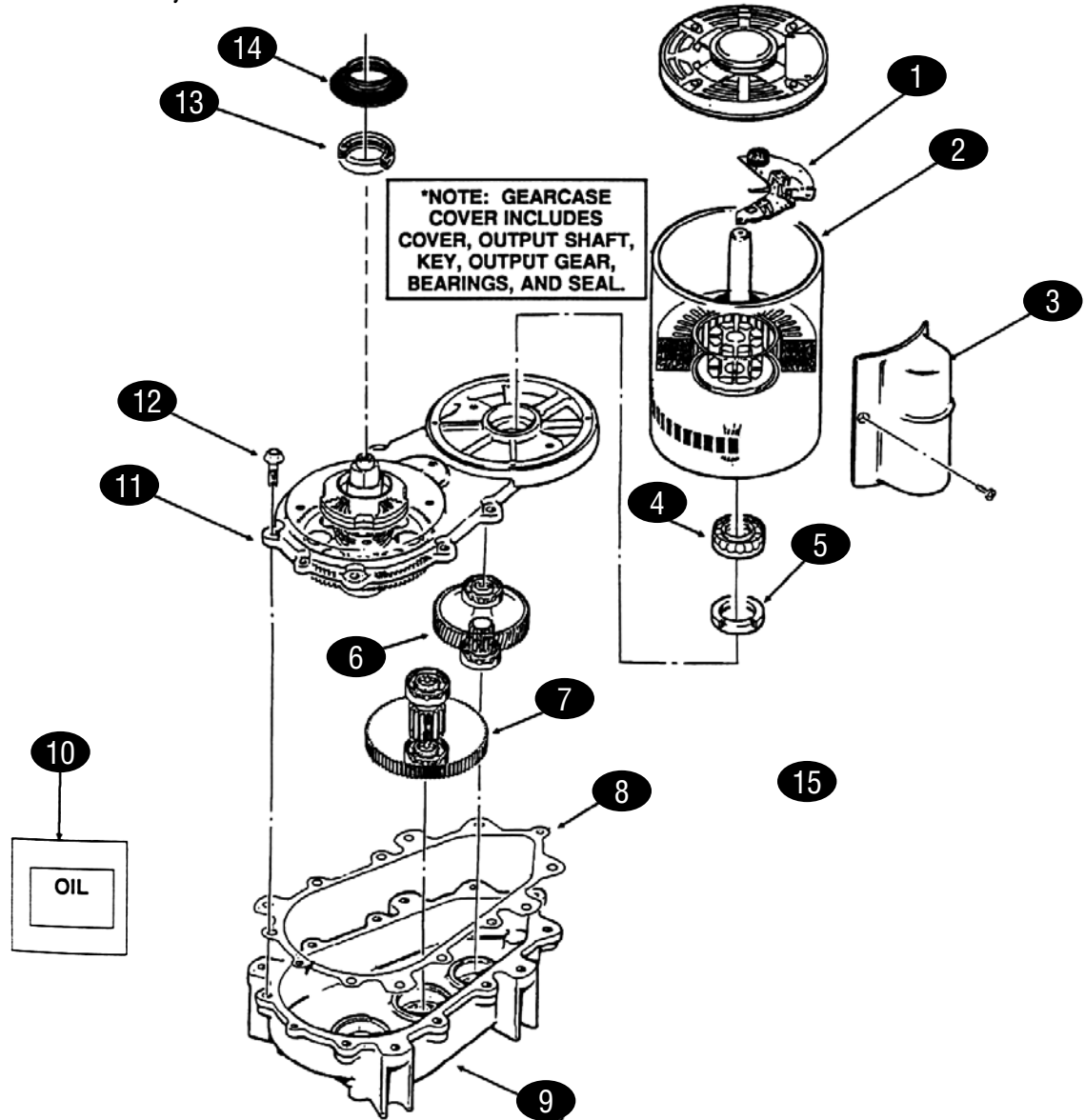


| KEY | PART # | DESCRIPTION | KEY | PART # | DESCRIPTION |
|-----|---------------|--------------------------|-----|---------------|-------------------------|
| 1 | SCT16-0780-01 | Thermo Expansion Valve | 15 | SCT18-6900-01 | Condenser, Water Cooled |
| 2 | SCT16-0560-00 | Valve Core | 16 | SCT03-1645-01 | Screw |
| 3 | SCT16-0563-00 | Valve Cap | 17 | SCT03-1417-09 | Washer |
| 4 | SCT18-5900-03 | Compressor, 208-230/60/3 | | | |
| | SCT18-5900-02 | Compressor, 208-230/60/1 | | | |
| 5 | SCT18-6800-01 | Grommet | | | |
| 6 | SCT18-2300-26 | Sleeve | | | |
| 7 | SCT03-1407-07 | Washer | | | |
| 8 | SCT03-1405-20 | Bolt | | | |
| 9 | SCTA32892-001 | Drain | | | |
| 10 | SCT02-2426-02 | Dryer | | | |
| 11 | SCT11-0447-20 | Low Pressure Control | | | |
| 12 | SCT11-0424-01 | Water Regulation Valve | | | |
| 13 | SCT16-0401-02 | Elbow | | | |
| 14 | SCT11-0446-21 | Pressure Control | | | |



| KEY | PART # | DESCRIPTION | KEY | PART # | DESCRIPTION |
|-----|---------------|--|-----|---------------|-----------------------------|
| 1 | SCTA32898-020 | Centrifugal Switch | 15 | SCTA33220-022 | Complete Assembly, 208-230V |
| 2 | SCT12-2430-22 | Drive Motor, 208-230V | | | |
| 3 | SCTA32898-031 | Capacitor | | | |
| 4 | SCTA32898-030 | Rotor Bearing | | | |
| 5 | SCTA32379-028 | Seal, Motor Shaft | | | |
| 6 | SCTA32379-024 | 1st Gear & Bearings | | | |
| 7 | SCTA32379-023 | 2nd Gear & Bearings | | | |
| 8 | SCTA32379-021 | Gasket | | | |
| 9 | SCTA32379-020 | Gearcase | | | |
| 10 | SCTA32379-027 | Oil, 1 Container | | | |
| 11 | SCTA32379-022 | Gearcase Cover, kit includes cover, output shaft & output gear, key, bearings & seal | | | |
| 12 | SCTA32379-026 | Bolt | | | |
| 13 | SCTA32379-029 | Seal, Output | | | |
| 14 | SCT13-0868-01 | Water Shed | | | |

refrigeration

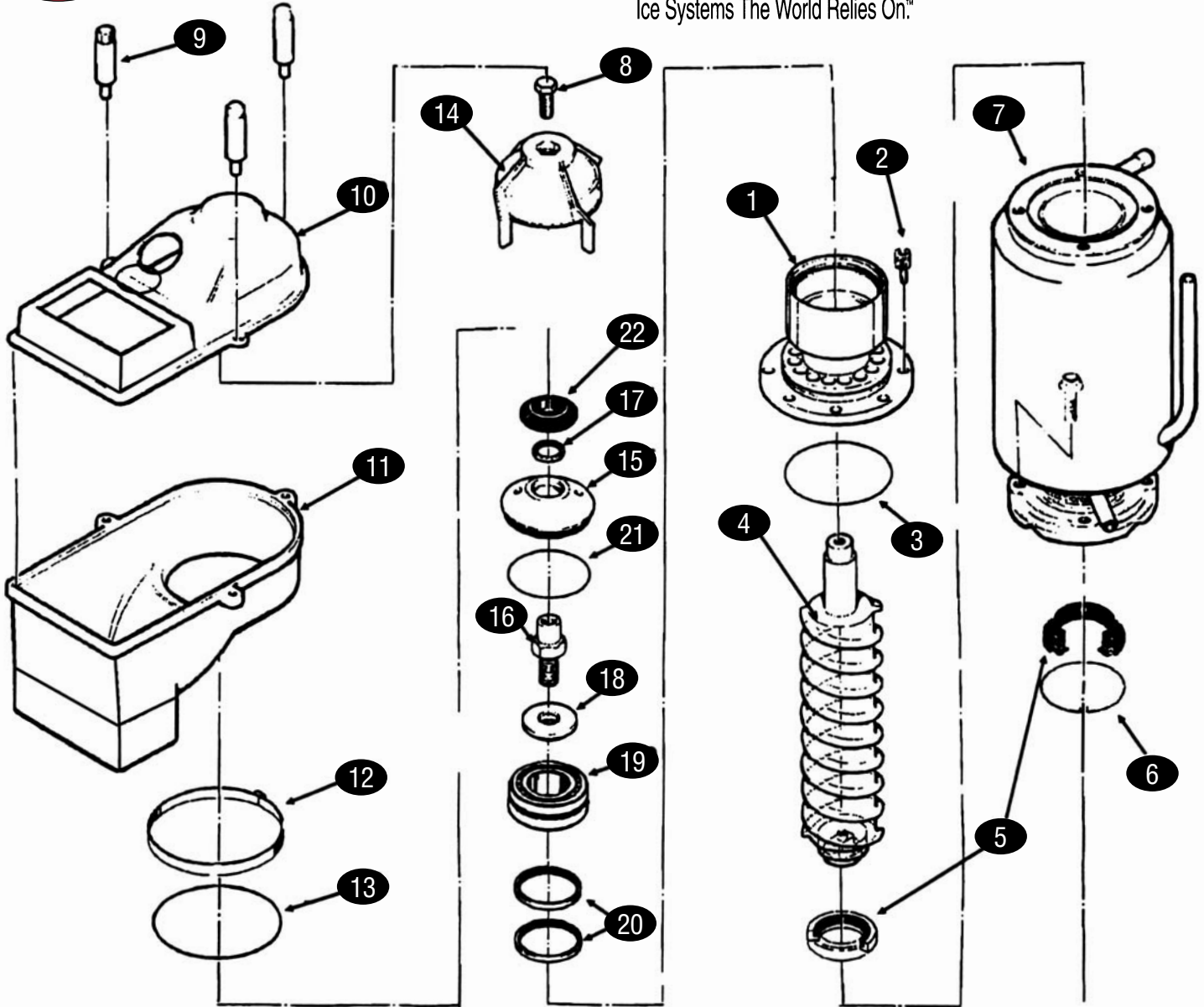
MODEL #NM1250, cont.

HAGAR

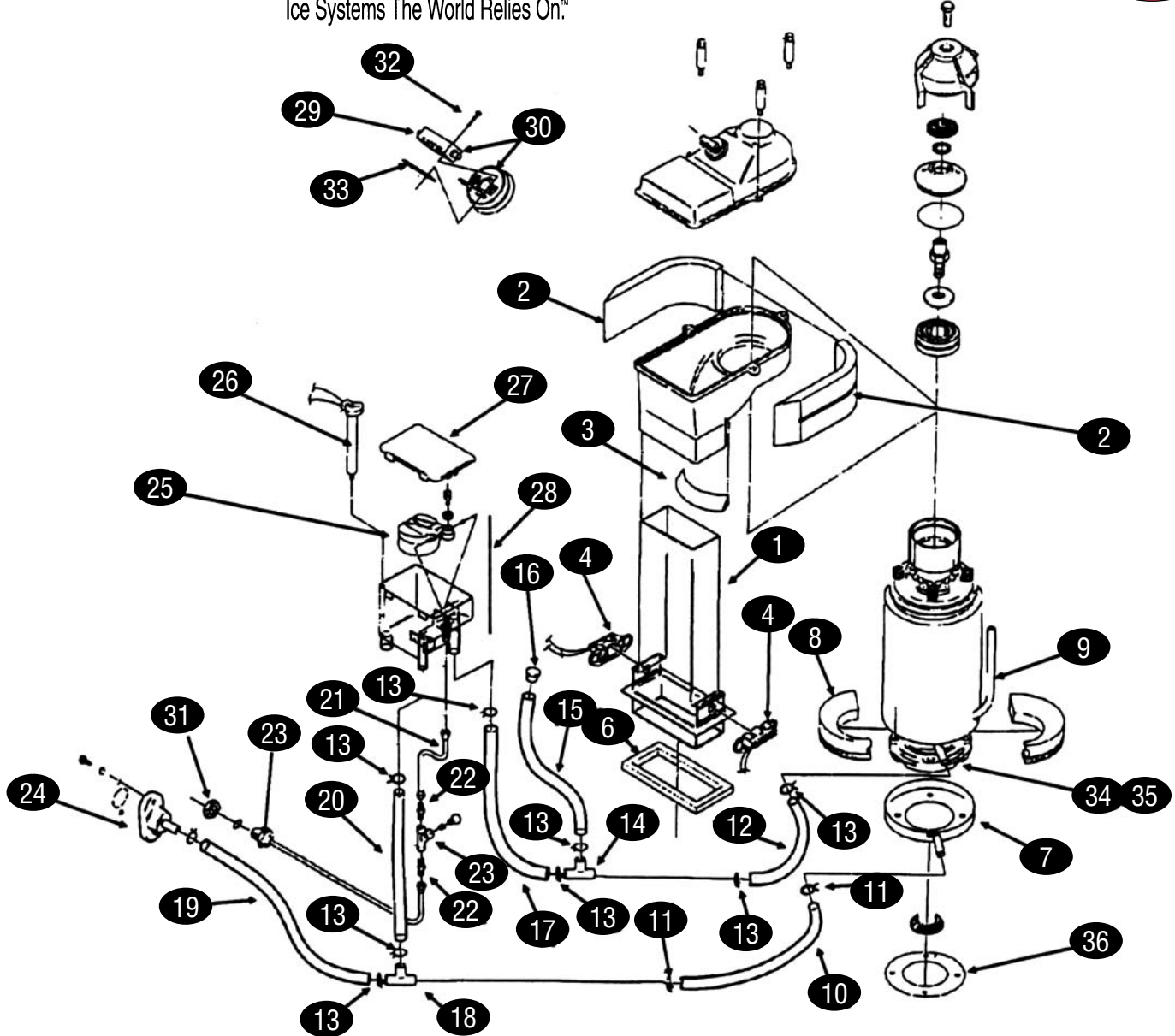
EVAPORATOR

SCOTSMAN

Ice Systems The World Relies On.™



| KEY | PART # | DESCRIPTION | KEY | PART # | DESCRIPTION |
|-----|---------------|---------------------------------------|-----|---------------|---------------|
| 1 | SCTA32900-020 | Breaker, (incl #19 & #20 below right) | 16 | SCT08-0653-01 | Auger Stud |
| 2 | SCT03-1544-08 | Socket Head Screw | 17 | SCT02-2978-01 | Lip Seal |
| 3 | SCT13-0617-45 | O-Ring | 18 | SCT08-0654-01 | Thrust Washer |
| 4 | SCT02-3003-01 | Auger | 19 | SCTA34559-020 | Bearing |
| 5 | SCT02-0929-02 | Water Seal | 20 | SCT02-2977-01 | Lip Seal |
| 6 | SCTA32777-001 | Ring, Water Seal | 21 | SCT13-0617-54 | O-Ring |
| 7 | SCTA32890-020 | Evaporator | 22 | SCT13-0871-01 | Water Shed |
| 8 | SCT03-1405-52 | Hex Cap Screw | | | |
| 9 | SCT02-2933-01 | Hex Stud | | | |
| 10 | SCT02-2930-01 | Ice Chute Cover | | | |
| 11 | SCT02-2926-01 | Ice Chute Body | | | |
| 12 | SCTA32905-001 | Clamp | | | |
| 13 | SCT13-0617-52 | O-Ring | | | |
| 14 | SCT02-3001-01 | Ice Sweep | | | |
| 15 | SCT08-0650-01 | Breaker Cover | | | |



| KEY | PART # | DESCRIPTION | KEY | PART # | DESCRIPTION |
|-----|---------------|---|-----|---------------|--|
| 1 | SCT02-2929-01 | Ice Chute, Lower | 19 | SCT13-0079-03 | Tube, 18", order by the foot |
| 2 | SCTA32963-001 | Insulation Collar, Top | 20 | SCT13-0079-03 | Tube, 11", order by the foot |
| 3 | SCTA33102-001 | Insulation Collar, Inside | 21 | SCTA32748-001 | Tube |
| n/s | SCTA33210-001 | Rubber Band | 22 | SCT16-0791-01 | Coupling Union |
| 4 | SCTA33117-020 | LED & Phototransistor Assembly, Set of 2 | 23 | SCTA32878-001 | Inlet Water Tube |
| 6 | SCTA32930-001 | Chute Gasket | 24 | SCTA32282-004 | Drain Casting, Air Cooled |
| 7 | SCTA32050-001 | Drip Pan | | SCTA32292-001 | Drain Casting, Water Cooled |
| 8 | SCTA32962-001 | Insulation Collar, Bottom | 25 | SCTA32922-020 | Float Assembly w/Pin, Seals, Insert & Float |
| 9 | SCTA32962-002 | Insulation Collar, Bottom Side | 26 | SCTA33101-022 | Thermo Probe |
| 10 | SCT13-0079-03 | Hose, 3.3", order by the foot | 27 | SCT02-2936-01 | Reservoir Cover |
| 11 | SCT02-0538-00 | Hose Clamp | 28 | SCTA32929-020 | Reservoir Assembly, Complete, incl #4 & #5 above |
| 12 | SCTA33203-001 | Preformed Hose | 31 | SCT03-1394-01 | Pal Nut |
| 13 | SCT02-2814-08 | Hose Clamp | 32 | SCT03-1403-09 | Screw |
| 14 | SCT16-0670-01 | Tee | 33 | SCT03-1394-01 | Speed Nut |
| 15 | SCT13-0674-06 | Evaporator Inlet Tube, 14", order by the foot | 34 | SCT03-1420-03 | Stud, Evaporator to Gear Motor |
| 16 | SCTA33205-001 | Plug | 35 | SCT03-1417-13 | Lock Washer |
| 17 | SCT13-0674-06 | Tube, 9", order by the foot | 36 | SCT13-0704-00 | Drip Pan Gasket |
| 18 | SCT16-0670-02 | Tee | | | |