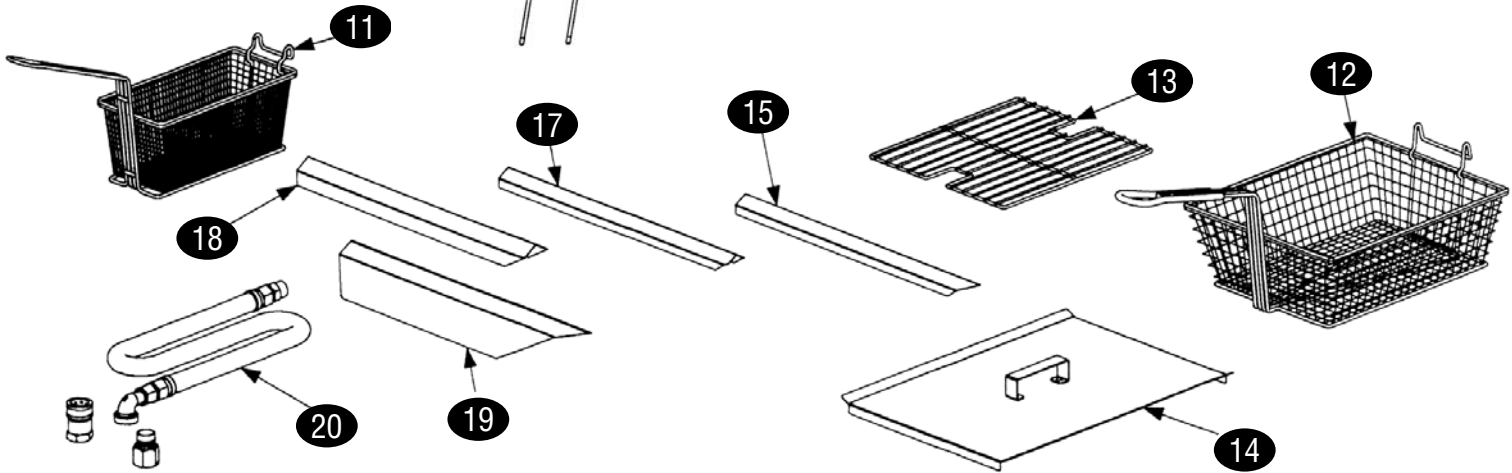
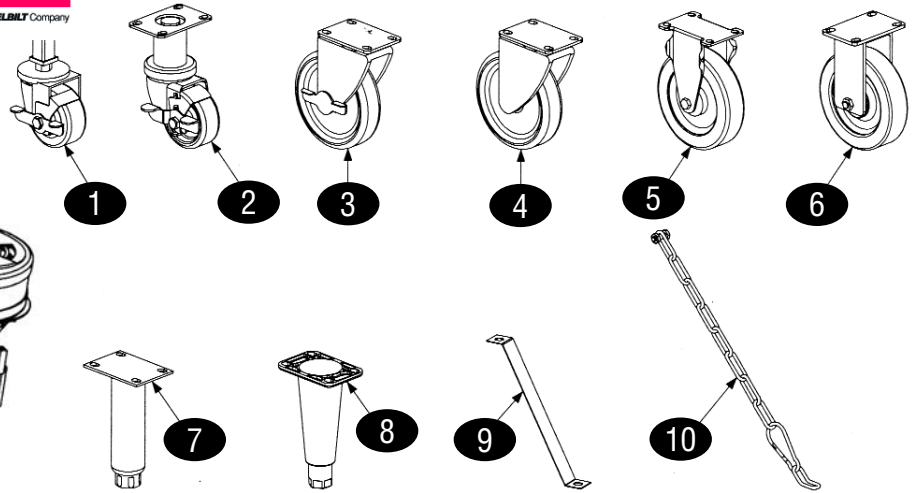
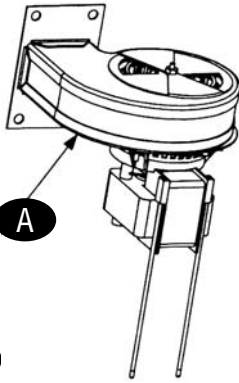


### Frymaster

A WELBILT Company



BLOWER MOTOR



KEY	PART #	DESCRIPTION	KEY	PART #	DESCRIPTION
A	FM106-2994SP	Blower, Left, w/1.54"W Housing, 115V, 50/60 Hz	18	FM910-2285	Connecting Strip, blunt point, 1"x20.80"Long
1	FM823-2669	Caster, Front, Single Foot Print	19	FM910-2572	Connecting Strip, sharp point, 3"x21.84"Long
2	FM826-1130	Caster, Swivel w/Brake, 3"	20	FM806-1698	Gas Line, 1" Flexible, 36"Long
3	FM826-1118	Caster, Swivel w/Brake, 5"	FM806-1699	Gas Line, 1" Flexible, 42"Long	
4	FM826-1117	Caster, Swivel w/o Brake, 5"			
5	FM826-1138	Caster, Rigid w/o Brake, 5"			
6	FM826-1114	Caster, Rigid w/o Brake, 5"			
7	FM826-1237	Leg Assy, Stainless Steel			
8	FM826-1115	Leg Assy, Nickel Plated			
9	FM826-1095	Anchor Strap Kit, use on Single Fryers w/Legs			
10	FM826-0900	Chain Restraint Kit, use on Fryers w/Casters			
11	H70023	Fry Basket, Twin			
12	FM803-0099	Full Basket, not used with Basket Lifts			
13	FM803-0132	Basket Support Rack, Full Vat			
n/s	FM803-0136	Basket Support Screen, Full Vat (used in place of			
14	FM806-5518	Cover, Frypot, Full Vat			
n/s	FM810-0180	Handle, Frypot Cover			
15	FM910-7515	Connecting Strip, sharp point, 1/2"x21.73"Long			
17	FM910-4617	Connecting Strip, blunt point, 1/2"x20.70"Long			