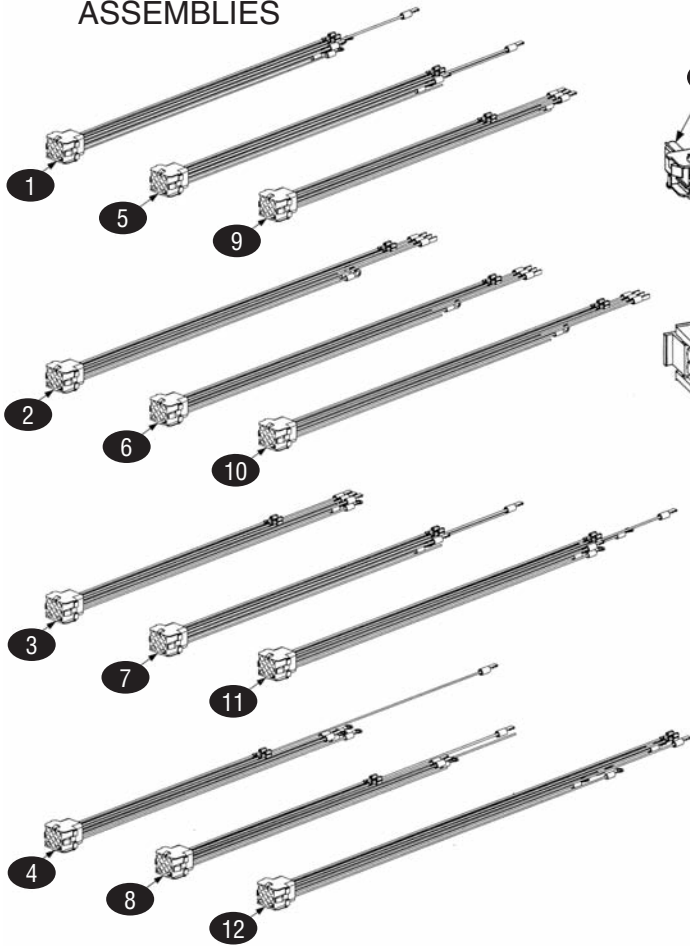
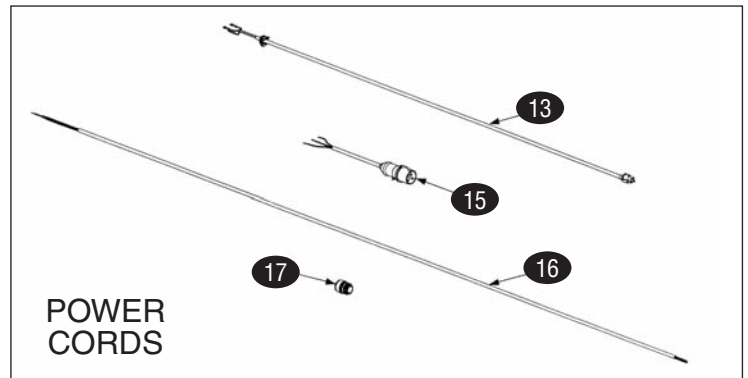
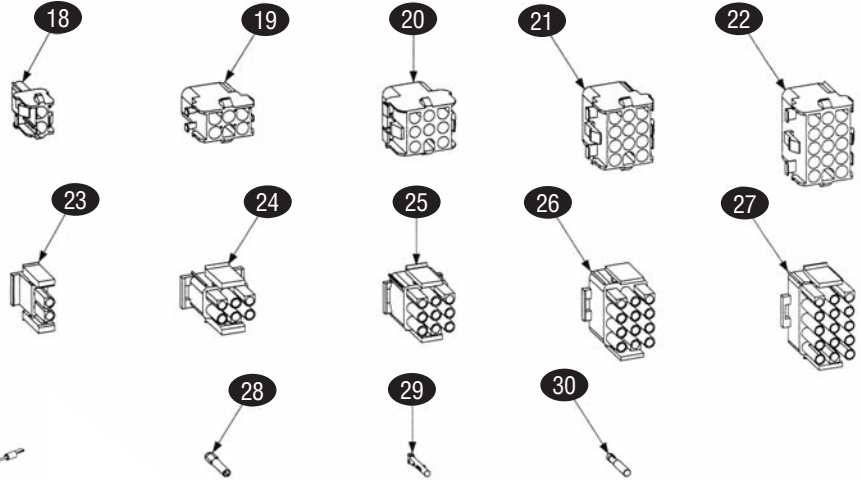


### TRANSFORMER BOX PLUG ASSEMBLIES



### PIN TERMINALS



| KEY | PART #       | DESCRIPTION   | KEY | PART #     | DESCRIPTION                  |
|-----|--------------|---|-----|------------|------------------------------|
| 1   | FM806-6164SP | FMH150, MJ/FM/FP250-Right, MJ/FM/FPH350/450-Left Front        | 19  | FM807-0158 | 6-Pin Female                 |
| 2   | FM806-6165SP | MJ/FM/FPH250-Left, MJ/FM/FPH350/450-Left Rear                 | 20  | FM807-0156 | 9-Pin Female                 |
| 3   | FM806-6166SP | MJ/FM/FPH350-Right, MJ/FM/FPH450-Right Rear                   | 21  | FM807-0159 | 12-Pin Female                |
| 4   | FM806-6167SP | MJ/FM/FPH450-Right Front                                      | 22  | FM807-0875 | 15-Pin Female                |
| 5   | FM806-6637SP | FMH150 CE, MJ/FM/FPH250 CE-Left                               | 23  | FM807-1067 | 2-Pin Male                   |
| 6   | FM806-6638SP | MJ/FM/FPH350 CE-Left Front, MJ/FM/FPH450 CE-Left Rear         | 24  | FM807-0157 | 6-Pin Male                   |
| 7   | FM806-6639SP | MJ/FM/FPH350 CE-Left Rear, MJ/FM/FPH450 CE-Left Front         | 25  | FM807-0155 | 9-Pin Male                   |
| 8   | FM806-6640SP | MJ/FM/FPH350 CE-Right Front                                   | 26  | FM807-0160 | 12-Pin Male                  |
| 9   | FM806-6641SP | MJ/FM/FPH350 CE-Right, MJ/FM/FPH450 CE-Right Rear             | 27  | FM807-0804 | 15-Pin Male                  |
| 10  | FM806-6642SP | MJ/FM/FPH250 CE-Right   | 28  | FM826-1341 | Terminal, Female Split Pin   |
| 11  | FM806-8712SP | MJ/FM/FPH250-Left   | 29  | FM826-1342 | Terminal, Male Split Pin     |
| 12  | FM806-8713SP | MJ/FM/FPH250-Right  | 30  | FM807-2518 | Plug, Mate-N-Lock, Dummy Pin |
| 13  | FM806-5332SP | Power Cord, 120V w/Grounding Plug, Push-On Terminals & Clamp  |     |            |                              |
| n/s | FM806-7742SP | Power Cord, 120V w/Grounding Plug, w/Ring Terminals, no Clamp |     |            |                              |
| n/s | FM807-0154   | Power Cord, 120V w/Grounding Plug, w/o Terminals or Clamp     |     |            |                              |
| 15  | FM807-1696   | Power Cord, CE  |     |            |                              |
| 16  | FM807-1685   | Power Cable, 110", 3-wire, 16-gauge, 450V, 18A                |     |            |                              |
| 17  | FM807-1560   | Strain Relief   |     |            |                              |
| 18  | FM807-1068   | 2-Pin Female  |     |            |                              |